

Commissioned by

Klangspuren Festival

Schwaz, Austria

2005 ewa trebacz
ephemerae
for symphonic wind ensemble

Written for and dedicated to

Windkraft Tirol

ewa trebacz
ephemerae

2005
for symphonic wind ensemble

duration :: 11 min.

commissioned by
Klangspuren Schwaz

written for and dedicated to
Windkraft Tirol

INSTRUMENTS

Flute Piccolo
Flutes (2)

Oboes (2)
English Horn in F

Clarinets (2) in B
Bass Clarinet in B

Bassoons (3),
optional: Contrabassoon
(Bs.3 muta in Cbs.)

Horns (4) in F

Trumpets (3) in B
Trombones (3)
Tuba in B

Percussion (2)

TUNING ::

FLUTES

Flute 1 :: tuned approximately 1/6 - 1/8 tone higher than flute 2.

Flute Piccolo :: tuned approximately 1/6 - 1/8 tone higher than the entire ensemble.

HORNS


Horns 1 & 2 :: should stay in tune with each other (and the rest of ensemble);

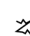
Horns 3 & 4 :: should be tuned approximately 1/6 - 1/8 tone lower
than horns 1 & 2 (stay in tune with each other).

Please feel free to experiment with other groups of instruments..

SYMBOLS USED IN THE SCORE ::


Horns

 regular flutter tongue (ftzg., frull.).

 breath tremolo, irregular density.

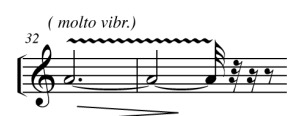
◊ ♦ **half-valved sounds:** diamond notehead indicates APPROXIMATE pitch.
Change pitch following shape above a note, oscillating the fingers and subtly changing timbre.
Treat each diamond-shaped note as an axis of pitch oscillation.

 narrow-range pitch oscillation (1/4 - 1/6 - 1/8 tone)

 wide-range pitch oscillation (approximate pitches!!!)

Woodwinds

Molto vibrato indicates pitch oscillation by 1/4 - 1/6 tone



Oboes: change of timbre achieved by varying the fingering:

